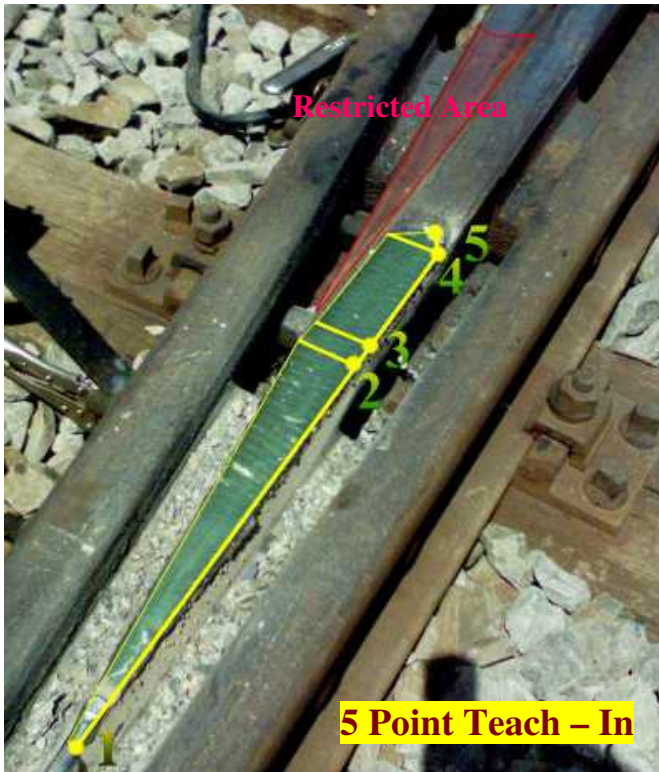


Welding Example ,Restricted Area', METRO Rome/Italy



To prevent the welding of the restricted area, the amplitude at point 3 is reduced from 62 (full rail) to 55%. The end of welding at point 5 is set closer to mid of rail, to get a save filling (no drop down) at stop dwell time.

E:\Dorn-Systeme\Tools\Surfacing.rdo

RD00235234 P00I01 10 00 25
 X:-00001 Y:+00000 Z:+00081

30 58 30 14 14
88 cm/min 117 cm/min 58 cm/min 33 cm/min 33 cm/min

P1	01	12	15	40
P2	02	12		
P3	05	12		
P4	05	12		
P5	01	12	35 cm/min	4.4 mm
P6	00	00		
P7	00	00		

	X/Y Point	X/Y mm	↔ mm
P1:			1
P2:	0/-3785	0/-423	50
P3:	0/-4041	0/-452	44
P4:	0/-5295	0/-593	44
P5:	48/-5453	9/-610	1
P6:	0/0	0/0	0
P7:	0/0	0/0	0

This picture has been captured from the data transfer program RD2000-S. All movement and positioning parameters can be memorized at a local computer. This software could be part of a quality management system and for later use at same works.

